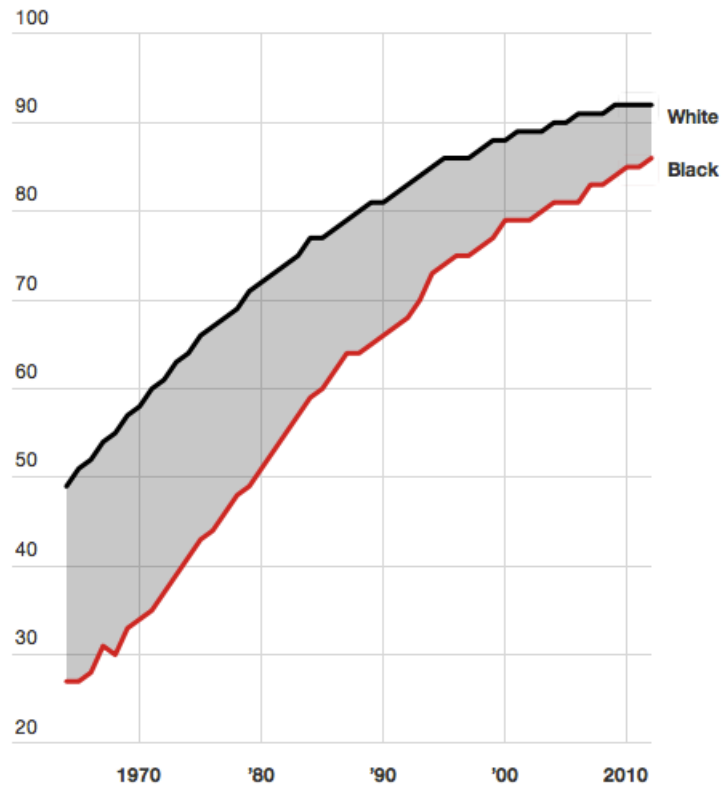
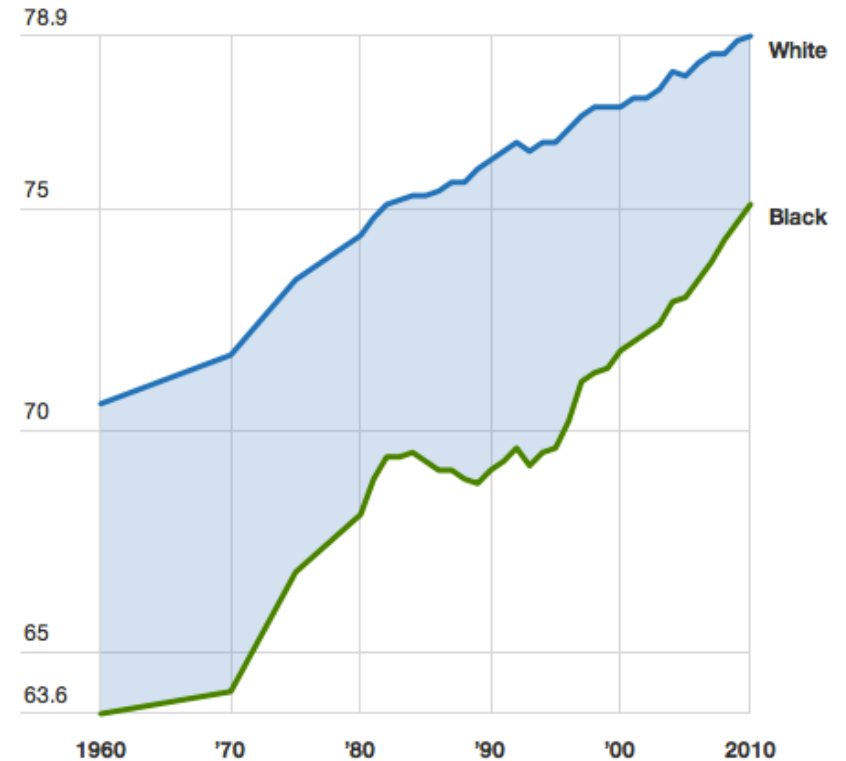


Where gaps have narrowed

Percentage of adults age 25 and older who have completed at least a high school education



Life expectancy at birth, in years



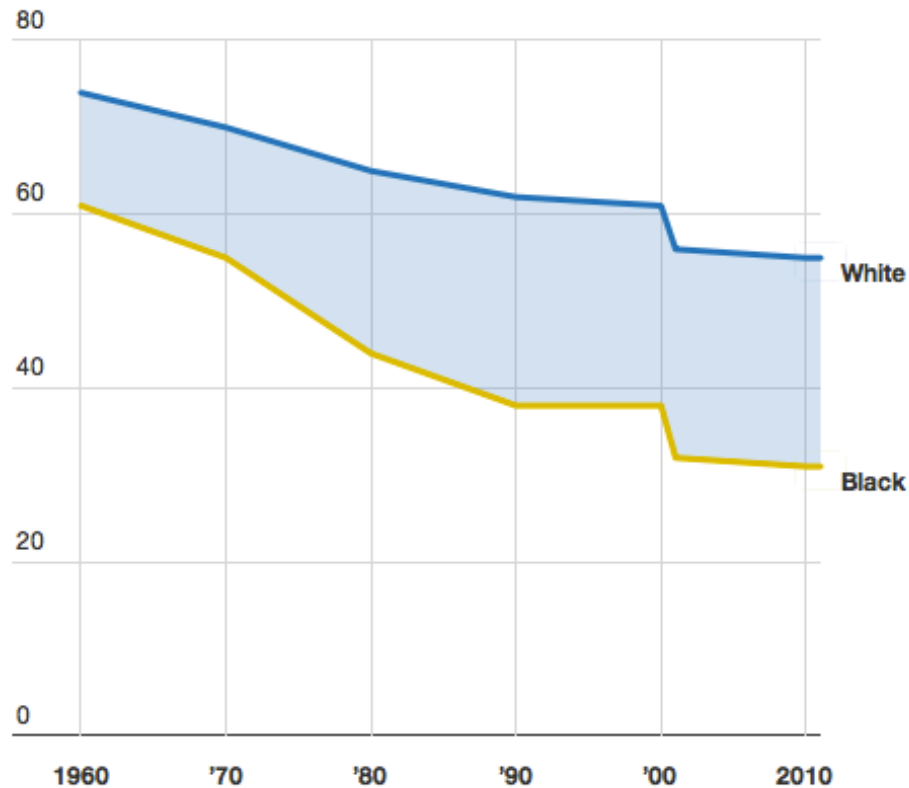
Created with [Datawrapper](#)

Source: [Pew Research](#), [Get the data](#)



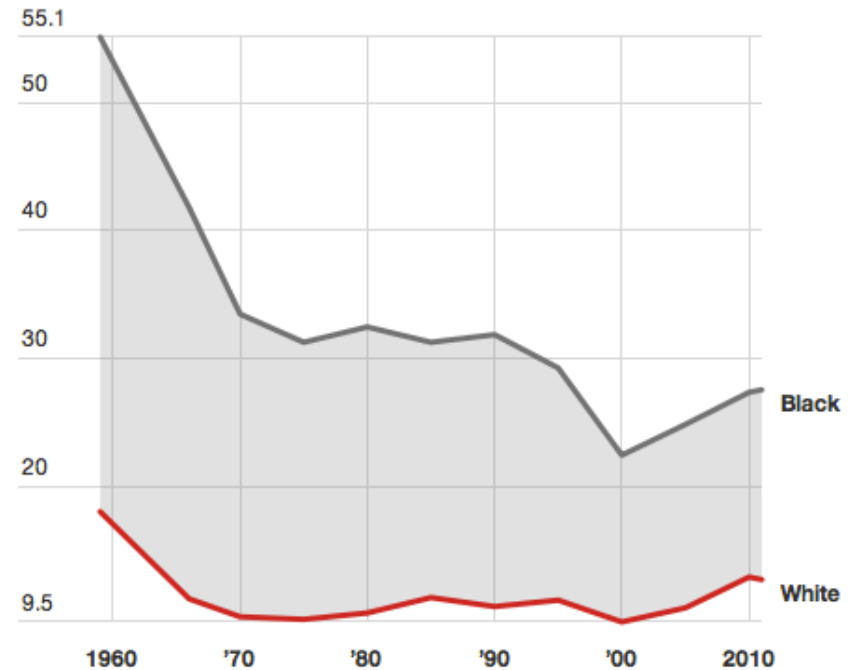
Where gaps have widened or stayed about the same

Percent of adults (ages 18 and older) currently married



Percent of population living below the federal poverty line

Note: white population includes white-Hispanic



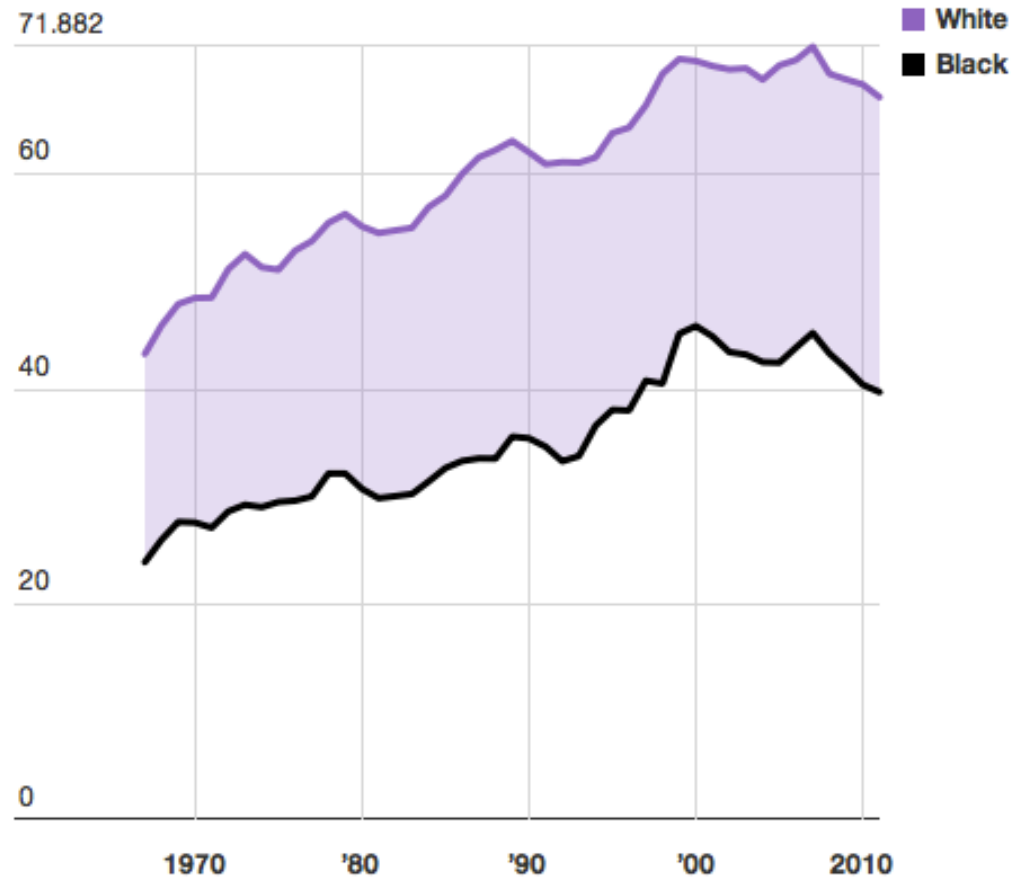
Created with [Datawrapper](#)

Source: [US Census Bureau](#), [Get the data](#)

65 cents for every dollar

Where gaps have widened or stayed about the same

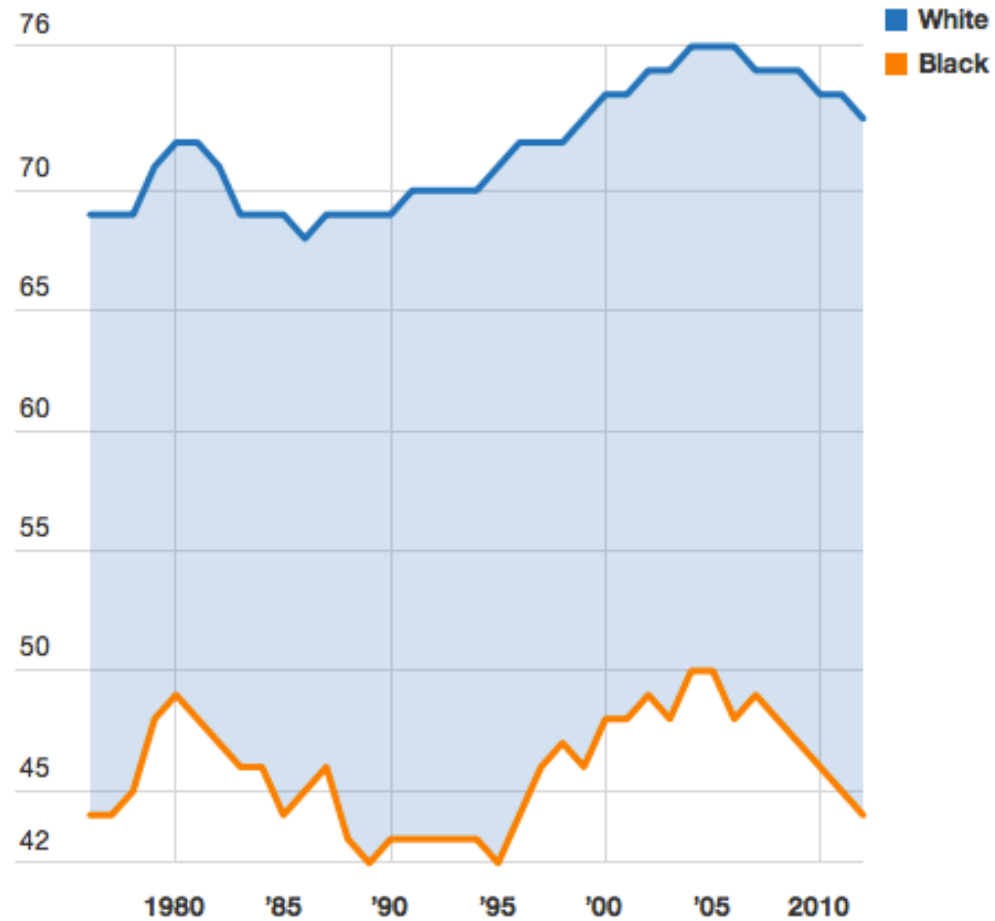
Median adjusted household income (scaled to a 3-person household), in 2012 dollars





Where gaps have widened or stayed about the same

Home ownership rate (percentage)



Created with [Datawrapper](#) Source: [Brew Research](#) (with data from Current Population Survey), [Get the data](#)

Where gaps have widened or stayed about the same

Unemployment Rate (by percent)

(16 years and older)

